



Better Management and Control of Zebra Mobile Devices

How to Deliver Automated Device Management, Asset Tracking, and User Access for Shared Devices



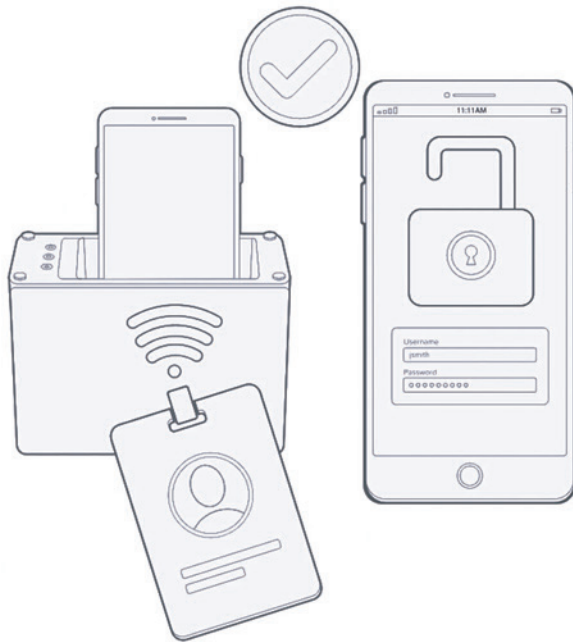


A Breakthrough in Shared Device Workflows with Imprivata and Zebra

Managing, controlling, and securing mobile computing devices has become much more challenging for IT personnel. Shared use environments complicate the challenge of providing end users with secure access to the right mobile devices, applications, and personalized experiences—especially as devices change hands and are used to deliver workflows on the go.

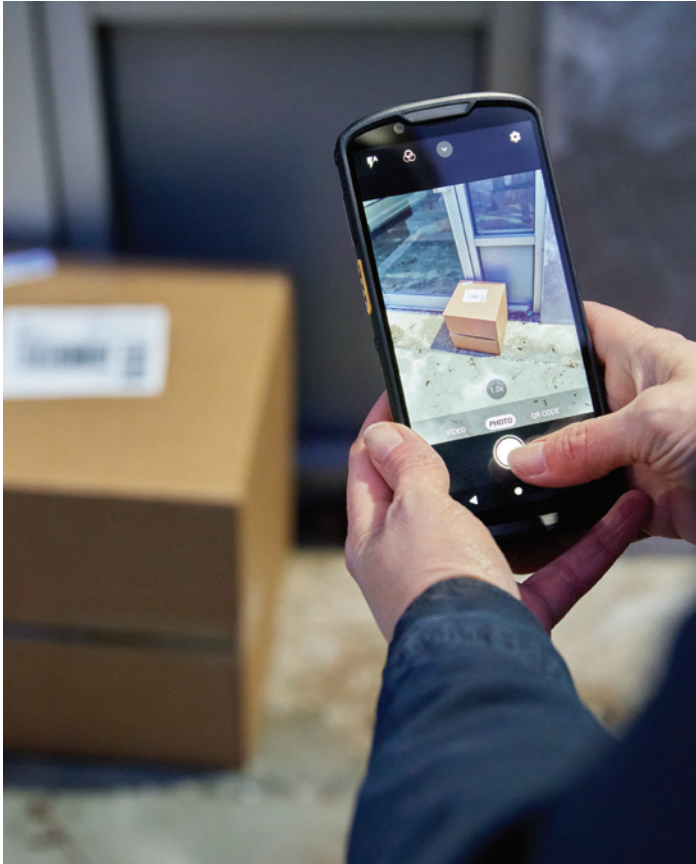
Fortunately, as device management needs have changed, so has the technology that helps IT teams manage their device fleets and support mobile workflows for end users. Working with IT leaders and organizations across the U.S., Imprivata, the digital identity company for mission- and life-critical industries, and Zebra Technologies, a global leader in mobile computing, can now support mobile access and control for shared-use Zebra devices.

This new integration with Imprivata Mobile Access and Control helps IT teams manage, control, and gain visibility into their entire fleet of Zebra Android enterprise mobile devices. It does this while delivering fast and efficient single sign-on and a seamless, personalized, and consistent mobile experience for end users.



Adding Device Management and Tracking to Your Shared Zebra Devices

Mobile Access and Control and Zebra devices work together to deliver extensive control over your enterprise-owned fleets. Using the powerful Mobile Access and Control platform in combination with your MDM solution, your IT team can manage your Zebra mobile devices accurately and easily. They can also provide end users with fast, personalized access to secured devices and applications to improve the mobile experience and support efficiency and productivity.



Core Benefits of Imprivata Mobile Access and Control and Zebra



Visibility into the State of Your Zebra Fleet

Get visibility into your entire fleet of Zebra devices, usage and locations—all accessible from the cloud.



Asset Management from the Cloud

Track device assignments, including, who, when, where and which devices have been checked out.



Automated Workflows to Manage Devices at Scale

Create simple, scalable workflow automation to support Zebra device management tasks.



Reduced Device Losses and Costs

Get actionable data in real-time and trigger notifications for missing or misplaced devices.



Privacy for Shared Assets

Enforce passcodes for each shared device and support locking devices between use.



Device Check-In and Check-Out

Users simply tap a badge to a SmartHub for quick and easy device assignment and access.



Seamless Sign-In to Applications

Provide fast, secure and easy access to mobile apps with friction-free logins, powered by Imprivata digital identity.



Increased Mobile Efficiency and User Satisfaction

Improve workflow efficiency, Zebra device adoption, and satisfaction for end users.

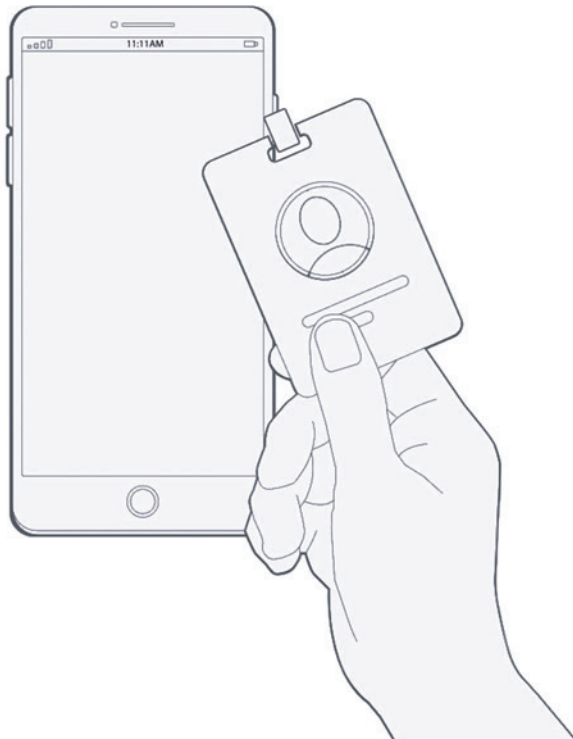


What Your IT Team Can Do with Mobile Access and Control and Zebra devices

The Mobile Access and Control platform creates an unprecedented combination of device visibility, management, and control and delivers personalized user experiences for organizations using Zebra mobile devices.

Here are some of the key things your IT team can do with its powerful tools:

- Provide convenient, user-friendly and personalized experiences on shared devices
- Add device management, tracking and security to your shared, enterprise devices
- Easily view device state, network connections, battery state and docking locations
- See if a device is checked out and who is signed into it at any time
- Easily identify and locate misplaced devices
- Trigger alerts if a device isn't returned when and where it should be
- Trigger alerts if a device is connected to the wrong SmartHub
- Significantly reduce the number of lost or replaced devices each year



How Mobile Access and Control Works

Mobile Access and Control is a comprehensive, end-to-end mobility solution that helps organizations optimize their mobile strategies. Imprivata delivers automated device management, secure device checkout, and fast, secure access for users, helping customers unlock the full potential of shared mobile devices by ensuring a fast, efficient workflow while improving security and auditability.

Mobile Access and Control provides remote management of device fleets via a hybrid-cloud management platform. With tight integrations into leading MDMs and on-the-ground Launch Pads to support USB tethered devices, Imprivata offers a hands-on-like experience for device management, from anywhere at any time.

With Imprivata, IT and mobile teams have the flexibility to support large fleets of devices with ease.



Three Pillars of Better Mobility

Mobile Access and Control addresses the challenges that prevent IT teams from enabling efficient, secure, and cost-effective Zebra-supported mobile workflows:



CONTROL

The ability to ensure devices are in the right state to provide a consistent and secure end-user experience.



ENABLEMENT

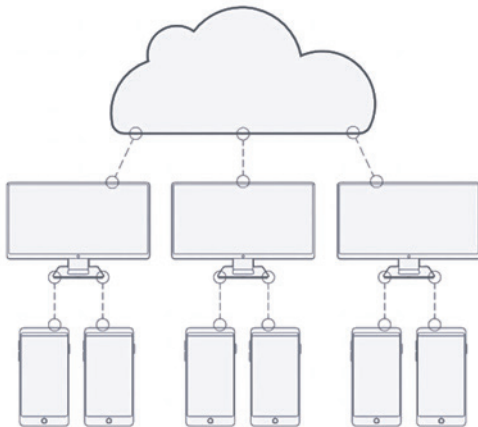
Providing secure access to the tools end users need to do their jobs more easily.



MANAGEMENT

Making it easy to manage, track and maintain devices from anywhere.

By creating the first solution of its kind to deliver access and control for Zebra Android devices, Mobile Access and Control provides a way forward for organizations looking to simplify and enhance mobility for IT and end users alike.





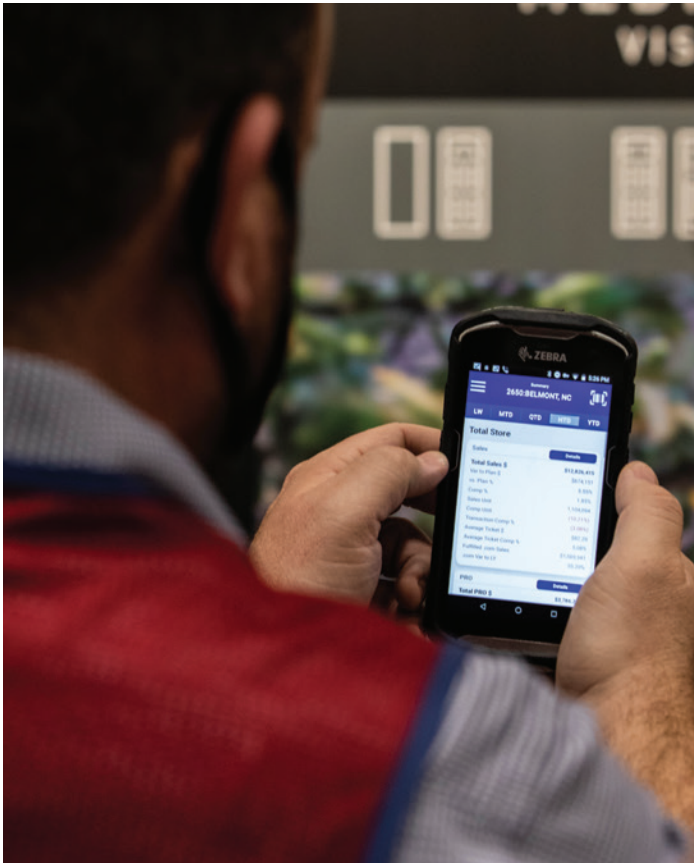
An Ideal Solution for Increasingly Mobile and Remote Workers

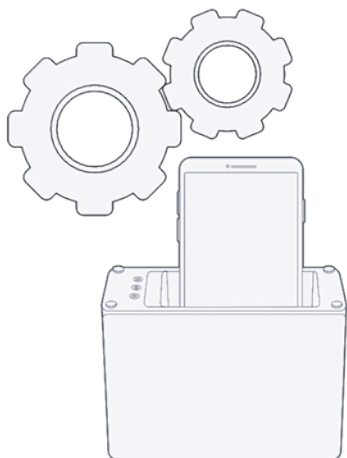
Mobile Access and Control is an ideal device management and tracking solution for Zebra enterprise-grade mobile computers, which provide users with real-time access to mobile apps, voice, video and data, whether they're at home, in the office, or on the go.

Mobile Access and Control supports all Zebra mobile computers, including Zebra's next-generation TC5X and TC2X Android handheld touch computers. The TC5X and TC2X offer the latest multi-core processing, expanded memory, and PowerPrecision+ battery technology for ultra-fast app response times and full-shift power. They also provide built-in 1D and 2D barcode scanning and imaging for seamless data capture, including signature and form field capture.

Mobile Access and Control also supports Zebra tablets, including the latest rugged ET8X and ET4X tablets, which can be used as a slate-style device and as a 2-in-1 desktop/laptop replacement with a detachable keyboard.

In all cases, Mobile Access and Control provides Zebra users with a secure, personalized experience on their mobile devices. With badge-tap device assignment and streamlined access to mobile tools, end users can spend less time interfacing with technology and more time focused on the work that matters.





Easier Management for IT and Mobile Teams

Mobile Access and Control gives teams visibility into Zebra mobile devices, their usage, and their status from virtually anywhere via the cloud. It also supports device security and privacy by locking devices between users. The whole idea is to make device management and control as easy as possible while keeping mobile authentication and user experiences as fast, convenient and user-friendly as possible.

Additionally, with Zebra's Mobility Extensions, you can deploy, manage and secure your devices with pre-installed tools that make it easier to manage your fleet. Zebra's Mx Security provides the latest Wi-Fi security protocols plus additional features and services to help protect your business data and network access. Zebra's Mx Mobile Application Management (MAM) gives you complete control over which apps can be installed and the app update process. And Zebra's Mobile Device Management (MDM) helps you extend the features of your current mobile device management platform to your Zebra mobile computers, to help you keep your devices secure, updated, and running optimally.

Crucial Benefits for Executive Leaders

Today's organizational leaders are facing the tough task of balancing mobile workforce efficiency with privacy and mobile device cost management. Together Imprivata Mobile Access and Control and Zebra make it easier to achieve the right balance between these different goals. The integration provides efficiency-boosting mobile experiences, gives IT better control over shared devices, and significantly reduces costs by minimizing the risk and management burden of lost or misplaced devices.

Optimized for Shared Zebra Devices

Mobile Access and Control is optimized for the Android operating system and industry-leading Zebra mobile computing devices, allowing your enterprise to boost mobile efficiency and productivity while maximizing the life, value, security and utilization of your Zebra mobile devices.





Learn More and Schedule a Demo

Contact Imprivata to learn more and schedule a demo at your convenience.

877-663-7446 | [imprivata.com](https://www.imprivata.com)

