



DATASHEET

Imprivata Analytics for Enterprise Access Management (EAM) and Mobile Access Management (MAM)

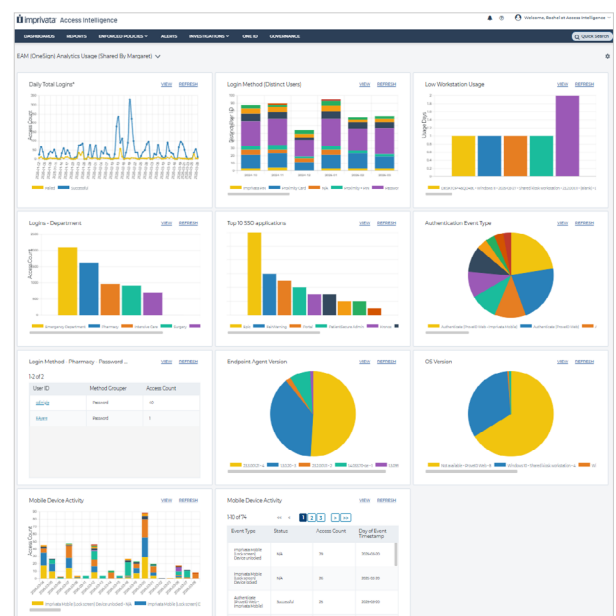


Drive savings, improve ROI, and enhance user experience with actionable insights from your access management data

Workstations and mobile devices have become vital to operations for large organizations. However, without clear visibility into their usage, it can be incredibly difficult to maximize ROI while enhancing workflow efficiency, security, and resource allocation. Imprivata Analytics transforms raw access and device usage data from Imprivata Enterprise Access Management (EAM) and Imprivata Mobile Access Management (MAM) and converts it into tailored, actionable insights, providing a no-code solution that:

- Leverages Imprivata's product expertise
- Provides immediate insights via a library of ready-built dashboards and reports
- Is highly customizable
- Alerts according to metrics you choose
- Delivers near-real-time data for both EAM and MAM
- Stores up to 3 years of data for quick search capabilities

Powered by the Imprivata Access Intelligence Platform (AIP), Imprivata Analytics provides broad visibility into your access and usage trends, enabling you to make data-driven decisions that enhance your user experience and drive ROI with operational improvements.





Imprivata Analytics for Enterprise Access Management (EAM)

Single sign-on (SSO) with Enterprise Access Management is critical for fast, efficient, and secure operations, and it also generates valuable data. With Imprivata Analytics for EAM, organizations can use this data to drill into a wide variety of use cases, including:

- **Optimize IT spend:** See most and least-used endpoints and applications to identify where licenses or hardware can be reduced or reallocated.
- **Drive adoption of EAM:** Gain insights into areas where EAM is not being used, allowing IT to target areas needing additional training or support.
- **Find user issues faster:** Proactively pinpoint user login and workstation problems, resolving them before they affect users, and reducing support calls.
- **Visualize deployment successes and gaps:** Custom dashboards and reports make it easy to showcase wins and highlight areas for improvement to leadership.
- **Highlight Savings:** Track time savings by analyzing overall login methods.
- **Enhance security:** Alert IT of potential security issues (like multiple failed logins, secure walkaway usage, etc.) ensuring quicker responses to potential threats.



Imprivata Analytics for Mobile Access Management (MAM)

Despite widespread deployment of mobile technologies, organizations often lack a unified view of mobile performance — making it challenging to pinpoint adoption barriers, manage devices effectively, and fully capitalize on mobile investments. Imprivata Analytics for Mobile Access Management enables organizations to:

- **Optimize mobile resource allocation:** Gain a clear understanding of actual usage data and trends for mobile devices and applications, enabling operational resources to be distributed efficiently and effectively.
- **Demonstrate ROI on mobile investments:** Showcase usage trends and justify mobile initiatives.
- **Reduce operational costs:** Identify opportunities to streamline workflows and eliminate unnecessary device or application expenditures.
- **Drive mobile adoption:** Track device and app usage patterns to uncover areas where additional training or support may be needed to improve utilization.
- **Enhance security:** Pinpoint potential security gaps and enforce policy compliance with mobile access monitoring.
- **Proactively manage mobile environments:** Leverage real-time insights and alerts to address performance issues and improve user experiences.



Imprivata is the digital identity company for mission- and life-critical industries, redefining how organizations solve complex workflow, security, and compliance challenges with solutions that protect critical data and applications without workflow disruption. Its platform of interoperable identity, authentication, and access management solutions enables organizations in over 45 countries to fully manage and secure all enterprise and third-party digital identities by establishing trust between people, technology, and information.

For more information, please contact us at:

Global headquarters USA

Waltham, MA

Phone: +1 877 663 7446

www.imprivata.com

European headquarters

Uxbridge, England

Phone: +44 (0)208 744 6500

www.imprivata.com/uk

Germany

Langenfeld

Phone: +49 (0)2173 99 385 0

www.imprivata.com/de

Australia

Melbourne

Phone: +61 3 8844 5533

Copyright © 2025 Imprivata, Inc. All rights reserved. Imprivata is a registered trademark of Imprivata, Inc. in the U.S. and other countries. All other trademarks are the property of their respective owners.